

"PIP" THE PAPER TURTLE!

———— CUT

----- FOLD

■ GUIDE FOR GLUING

1 - You can either print each page of this template on different coloured paper, or print the whole template on white paper if you'd prefer to colour it in. For best results, use thick paper if you have any! Remember, if colouring, leave the top and bottom shell until you've cut them out, because you'll need to colour the reverse sides.

2 - Carefully cut out around the black lines with scissors, avoiding the turtle's eyes, nose and detail on the flippers. Get an adult to help if you need it.

*Tip - When cutting the shell pattern page, carefully lay out the pieces in the same order so that you can attach them to the correct part on the shell later.

3 - Fold the dashed lines.

4 - Stick the front flippers to the top shell on the inside, making sure they point down and not up.

5 - Stick the back flippers to the top shell on the inside so that they curve in and not out.

6 - Glue each of the tabs on the head together. This is a little bit fiddly so get an adult to help if you need to!

7 - Stick the bottom of the head to the grey guide area on the bottom shell.

8 - On the top and bottom shell, carefully curve the paper, so that the two sides meet, sticking the grey guide tab to the adjacent side to close the gaps. Make sure the tabs and the flippers are on the inside of the shell.

9 - Fix the bottom shell to the top shell using the two tabs either side, again making sure the tabs are on the inside. Fold the top tab under the shell and glue to the top of the head.

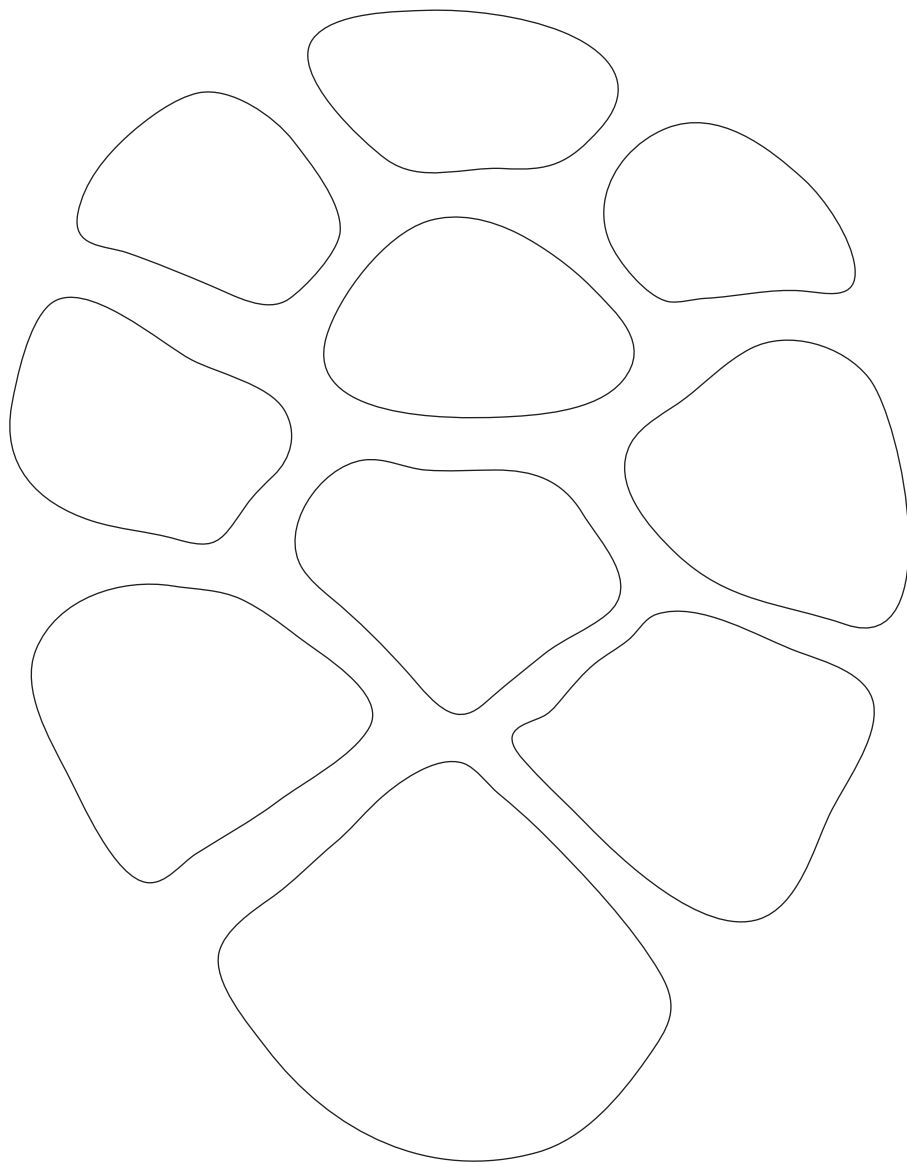
10 - Stick the shell pattern onto the top of the turtle's shell and give yourself a pat on the back!

Please share your creations on Instagram using the hashtag **#pipthepaperturtle** !

www.sampierpoint.com | @sampierpoint

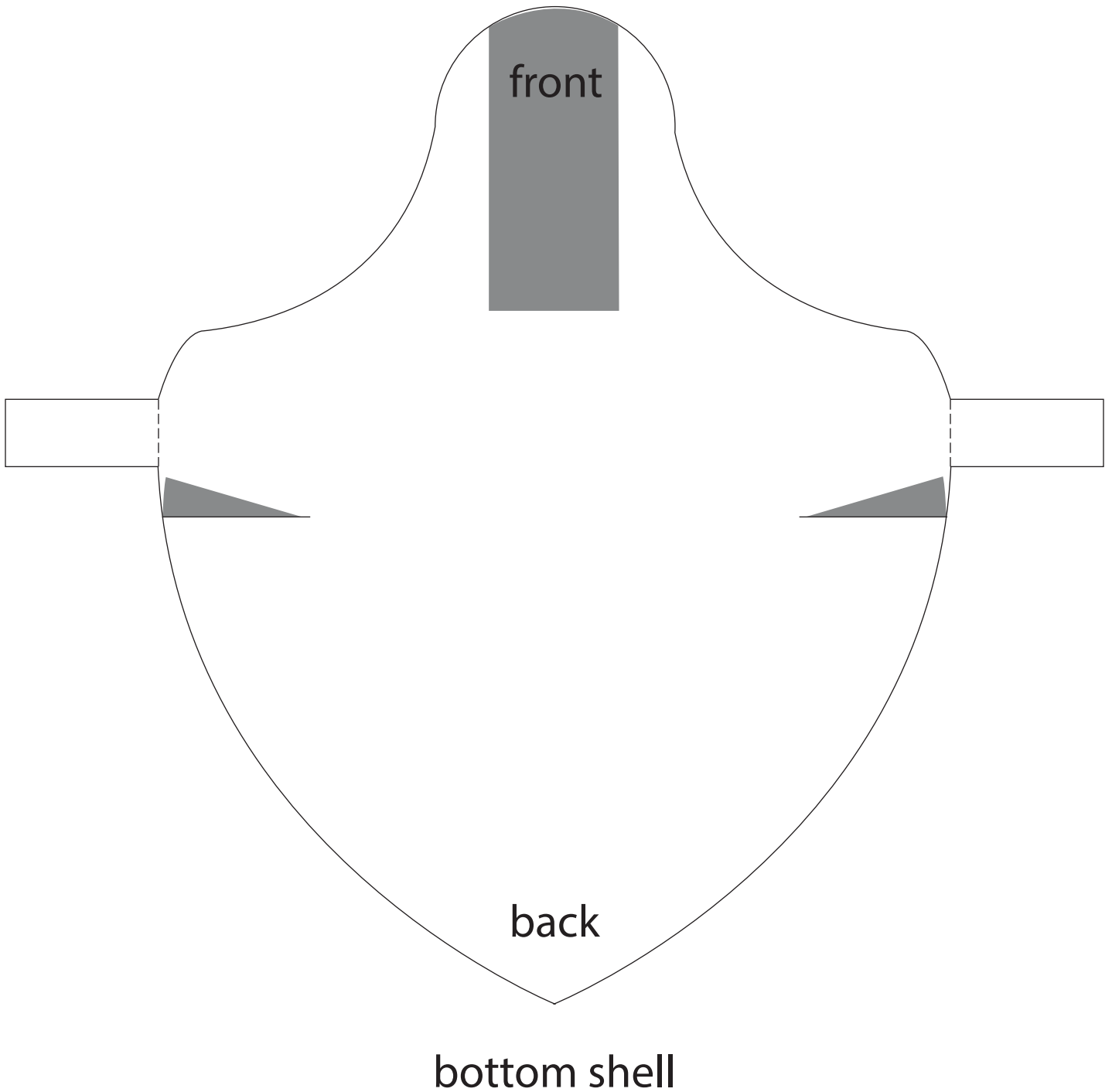


"PIP" THE PAPER TURTLE!

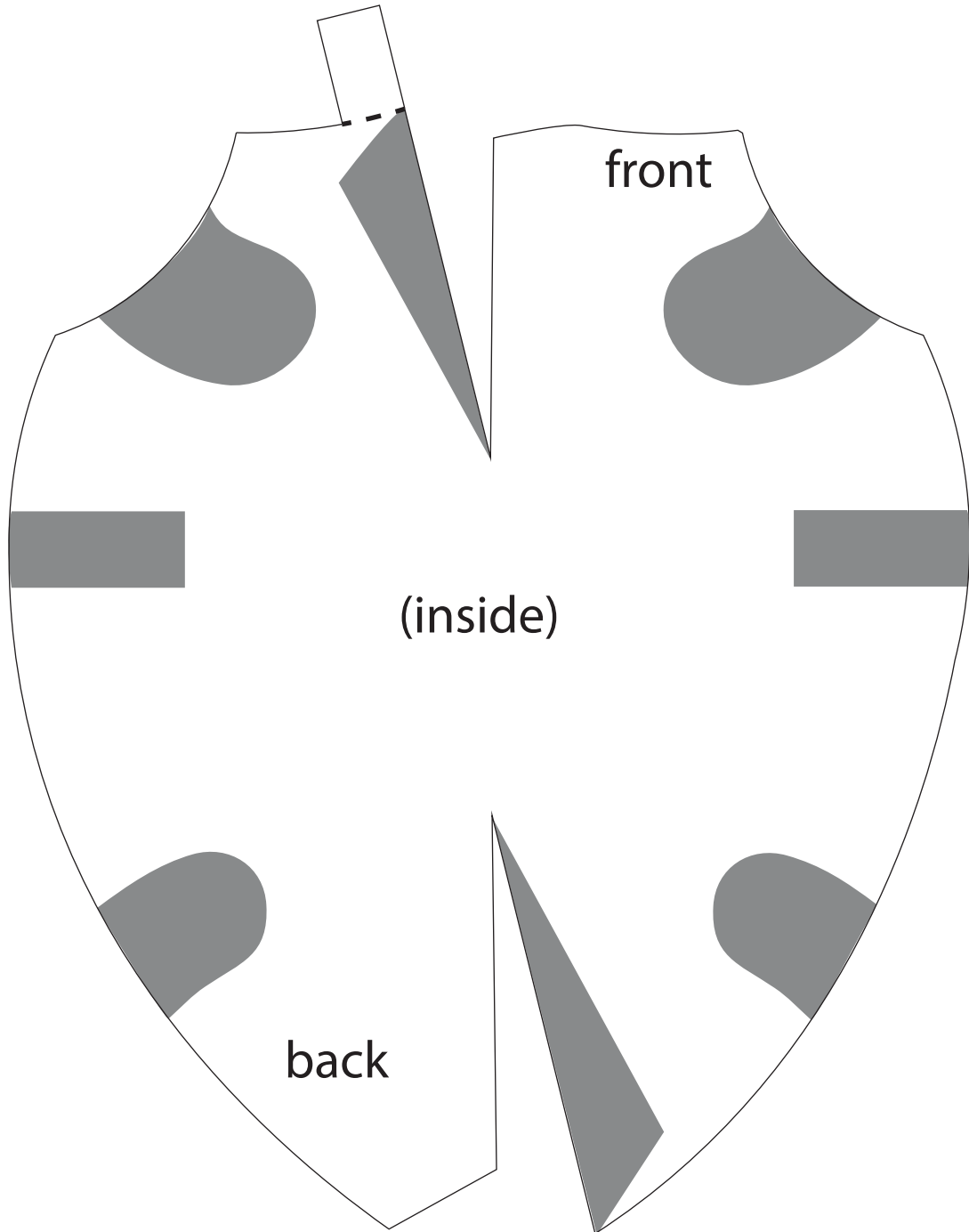


shell pattern

"PIP" THE PAPER TURTLE!



"PIP" THE PAPER TURTLE!



top shell

"PIP" THE PAPER TURTLE!

